

# HORIZONTAL DIRECTIONAL DRILLS



Horizontal directional drills (HDD) for  
trenchless utility installation in a range of  
Australian ground conditions



1300 VERMEER (1300 8376337)

[vermeeraustralia.com.au](http://vermeeraustralia.com.au)





Vermeer

NAVIGATOR

INTUITIVE & EASY TO USE  
**COMMON CONTROLS**  
**ACROSS MODELS**



# VERMEER NAVIGATOR® HDD CAPABILITIES

## THRUST/PULLBACK RATING



Up to 11,000 lb class  
Up to 5 tons



11,000 - 20,000 lb class  
5 - 9 tons



20,000 - 25,000 lb class  
9 - 11 tons



25,000 - 35,000 lb class  
11 - 15.5 tons



35,000 - 50,000 lb class  
15.5 - 22 tons

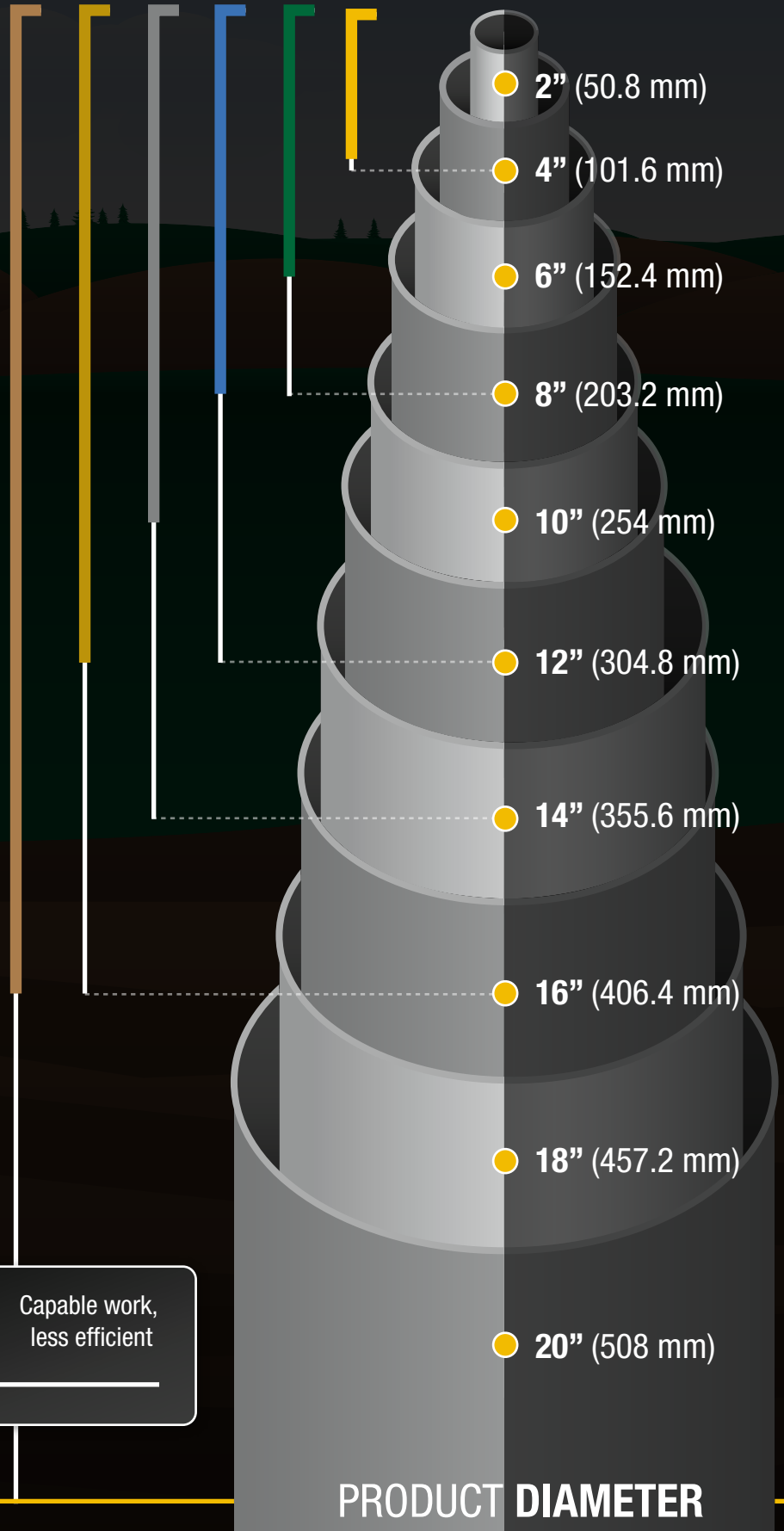


50,000 - 74,000 lb class  
22 - 33 tons

Majority of work,  
most efficient

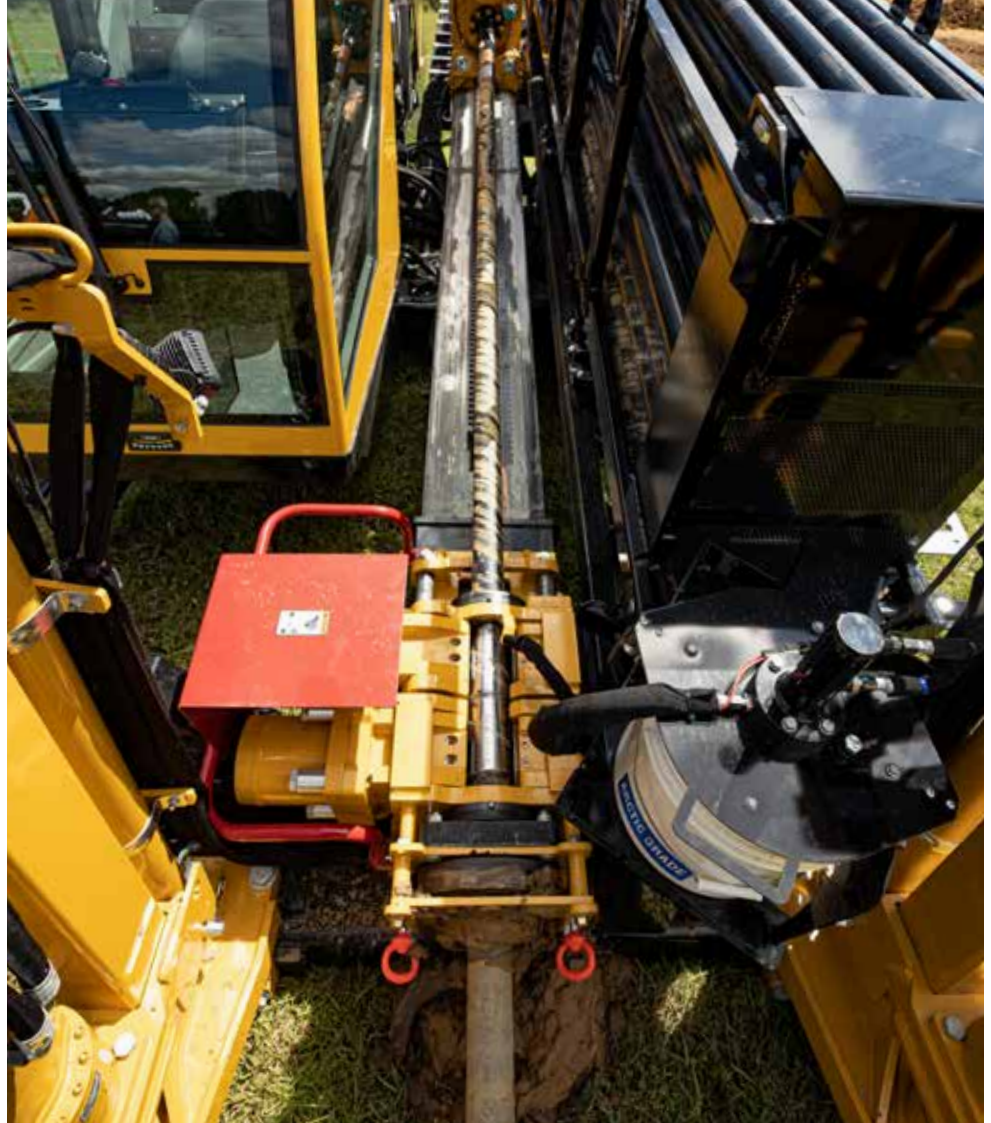


Capable work,  
less efficient



PRODUCT DIAMETER





## YOUR INFRASTRUCTURE **SOLUTIONS PROVIDER**

As the challenges posed by expanding populations grow, access to clean water, reliable electricity and utility services are a necessity. In order to meet the needs of rapidly developing societies, contractors and municipalities – around the world – need equipment that completes work efficiently and productively.

In more established locales, the demand for faster transfer of information is driving broadband and Fibre installation, while a rapidly aging water/sewer infrastructure is receiving a failing grade and needs replacement.

With more than 60 years of experience serving the underground construction industry, the Vermeer lineup of equipment and software solutions continues to evolve in order to meet these challenges. With a regional and local dealer support network, utility installation contractors can rest assured Vermeer Australia is ready and equipped to support your next job – wherever it takes you.

# SETTING THE STANDARD

The underground construction industry has evolved over the last 30 years and Vermeer has responded with drills designed to meet the expanding needs of contractors. The S3 drill lineup embodies this commitment to your success – a redesigned hydraulic circuit makes more efficient use of horsepower, while serious steps have been taken to increase speed, reduce sound and simplify controls to help you take on the challenges of today's jobsites. Vermeer drills are perfect for Australian conditions.

---

## THE VERMEER ADVANTAGE

Common controls throughout the Vermeer Navigator drill lineup make it more convenient for operators to go from one drill to the next.

Boasting efficient cycle times, S3 drills have been designed to maximise carriage, rotation, rod loading and tracking speeds to help your crew get the job done faster.

Increase the length of your next bore and minimise loading time with the semiautomated add-a-rod feature. Add more rods to maximise jobsite productivity. Available on select models.







# YOUR JOBSITE PARTNER

Local support that knows your operation is essential to your jobsite success. Vermeer Australia is committed to helping you find ways to positively improve your productivity through our expert sales, parts, service and support teams.

Our parts support team members are dedicated to your jobsite success, and pride themselves on the ability to deliver technical assistance and spare parts quickly.

---

## COMMITMENT TO OUR CUSTOMERS

When it's on the line, you require a partner who can provide the support and technology solutions to help keep your job productive. Vermeer Australia is ready to stand behind your next project - no matter where it takes you - with local expertise and dealer support.



# HORIZONTAL DIRECTIONAL DRILL

## 23X30DR S3

Built from direct operator feedback and input, the Vermeer 23x30DR S3 is a modern evolution of the industry-leading horizontal directional drill (HDD). Designed with next generation enhancements, the machine features several pending patents to optimise drilling productivity and operator comfort. The Vermeer 20x30DR S3 offers boosted power—20 more horsepower than some competitive models in its class—to maximise drilling performance.

The compact, yet powerful machine reduces jobsite footprint and has increased pipe-rack capacity compared to previous models, for enhanced productivity. Additionally, the new machine boasts a premier operator interface and station for a more transparent view into all machine operations, improved operator comfort and enhanced operational control.

---

### KEY FEATURES

1. A small footprint allows for efficient maneuvering of the drill into compact urban areas or busy neighbourhoods and can help with more convenient transportation of the machine on a trailer with other equipment.
2. The 100 hp (75 kW) Deutz TCD3.6L4 engine provides power to help drive the D23x30DR S3 to its peak performance.
3. This dual rod drill offers impressive power and performance in a compact design, enabling operators to confidently bore through hard rock and other challenging ground conditions.
4. Convenient access to the rear hood allows for service of the mud pump, and the open top vices help improve visibility for operators while making up rod joints, improving rod joint and coupling life.
5. Common controls can offer a more familiar operator experience to help crews transition to rock drilling from a single rod machine and get in and out of tough ground with precision and power.
6. A strong hex coupler design helps maximise wear life and time in operation between change outs.
7. This system also offers class-leading steerability at 7% per rod and class-leading steerability due to Vermeer's patented head design.
8. This rock drill follows the S3 sound badge, offering a noise level that can help with operator comfort and crew communication, as well as help create a quiet working environment to reduce disturbance in neighbourhoods and other populated urban areas.
9. The carriage and rotational speed can help with quick rod exchange and can enable crews to stay efficient and install more linear feet per day. Match your rotation speed to tooling for optimal performance and life.









# THE HDD SYSTEM INCLUDES

---

## HDD TOOLING

Vermeer's innovative HDD tooling is designed for dependability and engineered with your productivity in mind. With solutions available for all ground conditions, Vermeer Australia has all your needs covered.

---

## MUD MIXERS

A proper drilling fluid mix is critical to achieving maximum productivity. Vermeer engineered a series of drill fluid mixing systems to quickly combine water with polymers, wetting agents, bentonites, and other additives to help you achieve maximum productivity.

---

## VACUUM EXCAVATORS

Vermeer Vacuum Excavators save contractors time, labour, material handling costs, and most of all, reduces surface disruption and reduces the risk of damaging utilities during the excavation process. With units ranging between 400 and 11,000 litre spoil tank capacity and the CFM to match, we have your vac excavation requirements covered.

---

## VERIFIER G3 LOCATOR

With congested underground conditions, unmarked utilities and increasingly strict regulations, the accurate and timely locating of the Verifier G3 Locator is all the more important.

Users can expect a durable design that stands up to the toughest jobsite conditions, the most accurate push button Peak depths in the market, and the exclusive McLaughlin three-year warranty and weather-proof guarantee.





# HDD DRILLS CLAY/DIRT



**D8X12**



**D10X15 S3**



**D20X22 S3**



**D23X30 S3**



**D24X40 S3**



**D40X55 S3**



**D60X90 S3**

PRODUCT	ENGINE	THRUST/ PULLBACK	MAX SPINDLE TORQUE	FLUID PUMP	ONBOARD ROD CAP.	WEIGHT
D8x12	Kohler KD11903	7,850 lb (34.9kN)	1200 ft-lb (1627 Nm)	9 gpm (34.1 L/min)	180' (54.9m)	6600 lbs (2993.7 kg)
D10X15 S3	Deutz TD2.9 Diesel 60Hp (45KW)	10,000 lb (44.5 kN)	1500 ft-lb (2033.7 Nm)	15 gpm (56.8 L/min)	300' (91.4 m)	7200 lb (3265.9 kg)
D20X22 S3	Deutz TD2.9 Diesel 74 hp (55 kW)	19,550 lb (87 kN)	2250 ft-lb (3050.6 Nm)	25 gpm (94.6 L/min)	400' (122 m)	10,850 lb (4921.5 kg)
D23X30 S3	Deutz TCD3.6L4 Diesel 100 hp (75 kW)	24,000 lb (106.8 kN)	3000 ft-lb (4067.5 Nm)	35 gpm (132.3 L/min)	400' (122 m)	14,080 lb (6386.6 kg)
D24X40 S3	John Deere 4045 Diesel 125 hp (93 kW)	28,000 lb (124.6 kN)	4200 ft-lb (5694.4 Nm)	50 gpm (189.3 L/min)	500' (152.5 m)	22,250 lb (10,092.4 kg)
D40X55 S3	John Deere 4045 Diesel 140 hp (104 kW)	40,000 lb (177.9 kN)	5500 ft-lb (7457 Nm)	70 gpm (264.6 L/min)	450' (137.25 m)	26,110 lb (11,843.3 kg)
D60X90 S3	CAT 7.1 Diesel 202 hp (151 kW)	60,000 lb (266.9 kN)	9000 ft-lb (12,204 Nm)	150 gpm (567 L/min)	360' (109.7 m)	39,000 lb (17,690.1 kg)



**D23X30DR S3**



**D40X55DR S3**

# HDD DRILLS ROCK

PRODUCT	ENGINE	THRUST/ PULLBACK	MAX SPINDLE TORQUE		FLUID PUMP	ONBOARD ROD CAP.	WEIGHT
			OUTER ROD	INNER ROD			
D23X30DR S3	Deutz TCD3.6L4 Diesel 100 hp (75 kW)	24,000 lb (106.8 kN)	3000 ft-lb (4067.5 Nm)	800 lb-ft (1084.8 Nm)	35 gpm (132.3 L/min)	300' (91.4 m)	16,500 lb (7484 kg)
D40X55DR S3	John Deere 4045 Diesel 140 hp (104 kW)	40,000 lb (177.9 kN)	5500 ft-lb (7457 Nm)	1500 lb-ft (2033.7 Nm)	70 gpm (264.6 L/min)	450' (137.25 m)	31500 lb (14288 kg)



**⚠ DANGER**



**Vermeer®**

**D20x22**

**VERMEER**  
D20x22  
SERIAL NUMBER







SMALL, COMPACT  
**POWERFUL**

# VERMEER AUSTRALIA HAS **YOU COVERED**







## OUR CORE NETWORK

### ADELAIDE

9-11 Hakkinen Road,  
Wingfield, SA 5013 p. (08) 8213 8900

### ALBURY

3 Reiff Street,  
Lavington, NSW 2641 p. (02) 6049 9200

### BRISBANE

147 Archerfield Road,  
Richlands, QLD 4077 p. (07) 3564 4400  
p. (07) 3275 4888

### LAUNCESTON

17-23 Montague Street,  
Invermay, TAS 7248 p. (03) 6335 7300

### MELBOURNE

415 Fitzgerald Road,  
Derrimut, VIC 3026 p. (03) 8851 6200

### SYDNEY

45 Eastern Creek Drive,  
Eastern Creek, NSW 2766 p. (02) 9835 7200

### TOWNSVILLE

696 Ingham Road,  
Mt Louisa, QLD 4818 p. (07) 4774 2427

---

### BUNDABERG AUTHORISED SERVICE CENTRE

19-23 Enterprise Street,  
Bundaberg West QLD 4670 p. (07) 4331 8500

## GROUP LOCATIONS

LOCATIONS	RDO	VERMEER	VANDERFIELD
ADELAIDE	○	○	
ALBURY	○	○	
BEAUDESERT			○
BILOELA			○
BUNDABERG		○	○
BRISBANE	○	○	
CABOOLTURE			○
CHINCHILLA			○
DALBY			○
DARWIN	○		○
EMERALD	○		○
GATTON			○
GOONDIWINDI			○
GYMPIE			○
INVERELL			○
LISMORE			○
LOGANHOLME			○
LAUNCESTON	○	○	
MACKAY (KUTTABULL)	○		○
MACLEAN			○
MELBOURNE	○	○	
MOREE			○
ROMA	○		○
RUTHERFORD			○
ST GEORGE			○
SYDNEY	○	○	
TAREE			○
TOOWOOMBA	○		○
TOWNSVILLE	○	○	

## SERVICE SUPPORT

We've got you supported with close to 100 service technicians across our Vermeer Australia dealer locations and more than 130 technicians across the RDO Australia Group network.



[www.vermeeraustralia.com.au](http://www.vermeeraustralia.com.au)

1300 VERMEER (1300 8376337)

STAY **UP-TO-DATE**

