

250

UTILITY TRACTOR

BRON
POWER TO PERFORM



Installing 3-phase power has never been easier or quicker than with the BRON 250 Utility Tractor. The BRON 250 is available with a patented installation chute that consists of multi-duct openings with a hopper to install your preferred aggregate around cables or ducts.

SUPERIOR OPERATOR CONTROL & COMFORT
V250 OFFSETTING VIBRATORY UTILITY PLOW

72" MAXIMUM PLOWING DEPTH

D6 UNDERCARRIAGE

6.2 PSI

LOW GROUND PRESSURE

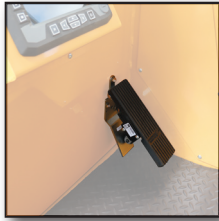
OSCILLATING TRACKS

MANOEUVERABILITY

335 HP

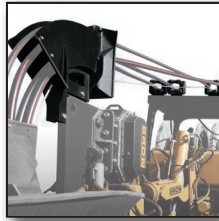
EFFICIENT POWER

FEATURES



DECELERATOR PEDAL

The decelerator pedal offers the option to change operating ranges for specific applications. Allows full hydraulic flow to the plow when slower travel speeds are required.



FAIRLEADS & SLIDER CHUTE

Fairleads on the roof & a slider chute keep the cables in line, organized & ready for installation. Additional fairleads & 40" fairleads are available as options.



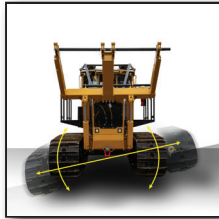
ROPS CAB

Roll-Over Protection Structure (ROPS certified) canopy protects the operator.



REEL CARRIER

The 8,000 lb reel carrier can handle two spools of product for ease of dual installation.



OSCILLATING & SELF-LEVELING TRACKS

Tracks pivot independently for maximum traction. Hydraulic cylinders keep the machine level for perfect grading across sloped surfaces.



V250 PLOW

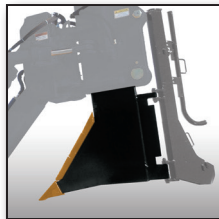
Ideal for installations where tractive power is limited, this offsetting vibratory plow is designed for the installation of fibre optics, electrical cables, conduit, and pipe.

OPTIONS



CAB

Spacious Heated & Air Conditioned cab is designed for operator comfort. Highback swivel seat & tinted glass are standard features.



BLADE & GUARDS

Slant Blades & K-Line Blades are available on the BRON V250. Various size guards are available based on the size of product being installed.



POWER REWIND

Enables a figure 8 pattern as the cable/line comes on or off the reel, helping to prevent cable damage.



POSITIVE AIR SHUT-OFF

The positive air shut-off shuts down the engine by preventing air intake.



CHUTE & HOPPER

A variety of chutes are available to accommodate your installation requirements, including sand hopper and custom solutions.



TAPE HOLDER & FEED TUBE

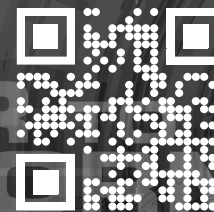
Adjustable Tape Holder and Feed Tube to install Warning Tape above the cable at various depths.

UTILITY TRACTOR SPECIFICATIONS

Operating Weight - lbs (kg)	66,000 (30,000)
Overall Width (Footprint) - in. (mm)	120" (3,048)
Overall Height - in. (mm)	143" (3,632)
Length With Attachment - in. (mm)	430" (10,822)
Operator Station	ROPS Enclosure (Optional Canopy)
Steering	Joystick
Engine Make & Model	Cat® C9
Emissions Certified	Stage V
Net Power - hp (KW)	335 (250)
Fuel Tank Capacity - U.S. Gal. (L)	107 (405)
Ground Pressure - psi (kPa)	6.2 (42.7)
Ground Clearance - in. (mm)	18" (457)
Undercarriage	D6
Travel Speed - mph (kph)	3.8 (6.0)
Compatible Plow Styles	V250
Maximum Cutting Depth - in. (mm)	72" (1,829)
Track Drive	Hydrostatic 2-Speed Automatic (Variable Speed)
Shoe Width - in. (mm)	30" (762)
Rollers Per Side	11
Hydraulic Tank Capacity - U.S. Gal. (L)	78 (295)

The manufacturer reserves the right to make changes at any time.
BRON is a registered trademark of RWF Industries, a division of Roberts Welding & Fabricating Ltd.

BRON
POWER TO PERFORM



Toll Free: 1.800.263.1060
Tel: 1.519.421.0036
Fax: 519.421.0028
Email: info@rwfbron.com

873 Devonshire Avenue,
Woodstock, Ontario,
Canada, N4S 8Z4

www.rwfbron.com